

# BRITISH HOUSE

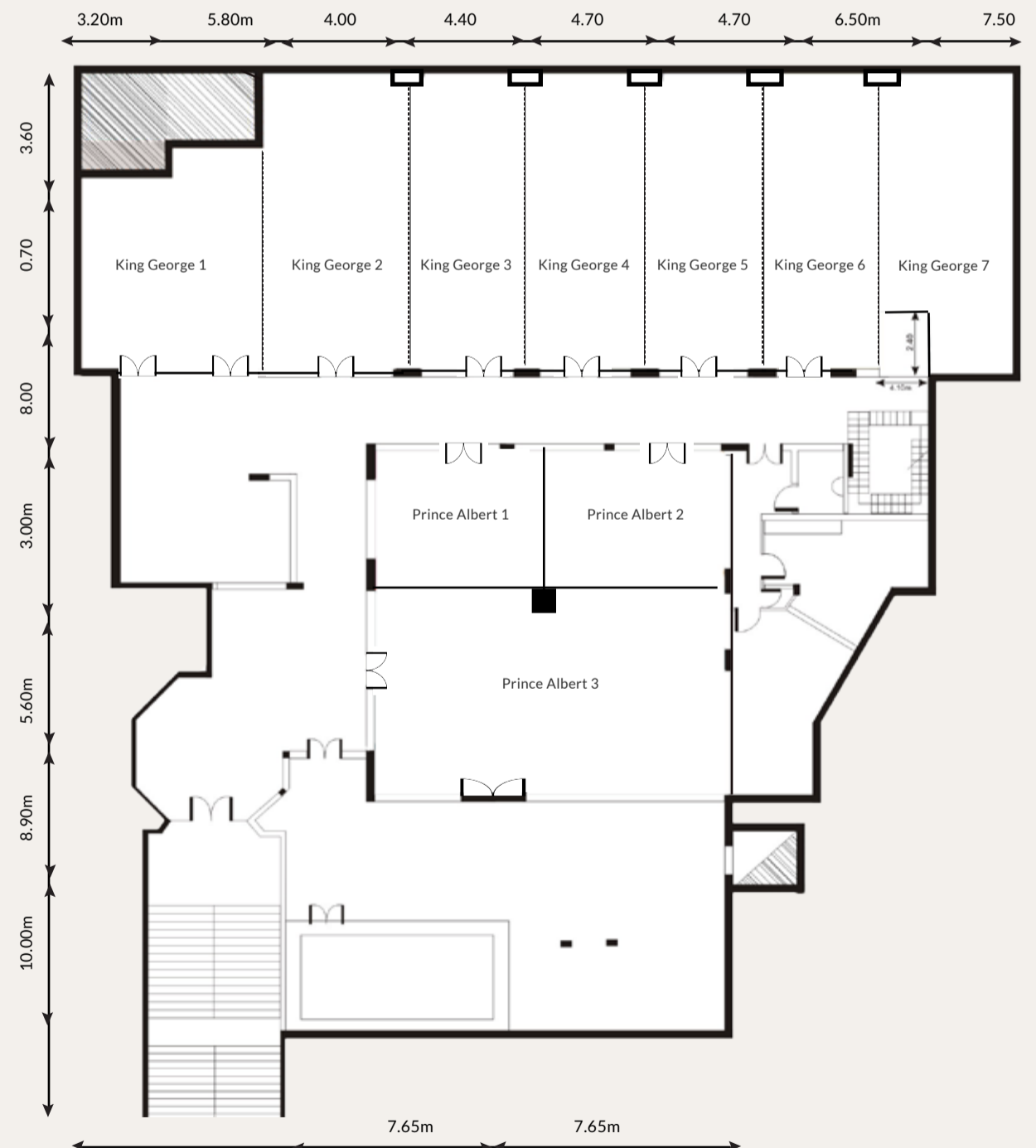
## (Floor plan)

The British House comprises ten meeting rooms, accommodating up to 520 people. The rooms in the British House can be arranged to accommodate the needs of groups, by dividing them into breakout rooms or configurations to cater for corporate or business requirements. Each room is air-conditioned and has state-of-the-art equipment for audio and video presentations.



CONFERENCE C	SIZE M	SHAPE	HEIGHT M	AREA sq/m
King George 1-7	40.00 X 12.30		3.00	492
Prince Albert 1-3	15.30 X 14.50		3.00	222

FUNCTION ROOM	THEATRE	CLASS ROOM	U-SHAPE	COCKTAIL PARTY	BANQUET	BLOCK TABLE
King George 1-7	400	170	80	390	350	90
King Albet 1-3	120	60	45	120	80	51
King George 1	60	45	24	50	40	24
King George 2	35	21	21	20	24	20
King George 3	40	36	21	30	24	24
King George 4	50	36	21	30	24	24
King George 5	50	36	21	30	24	24
King George 6	60	36	24	45	40	30
King George 7	80	45	24	50	40	30
Prince Albert 1	45	24	18	25	20	18
Prince Albert 2	45	24	18	25	20	18
Prince Albert 3	100	80	45	80	64	51

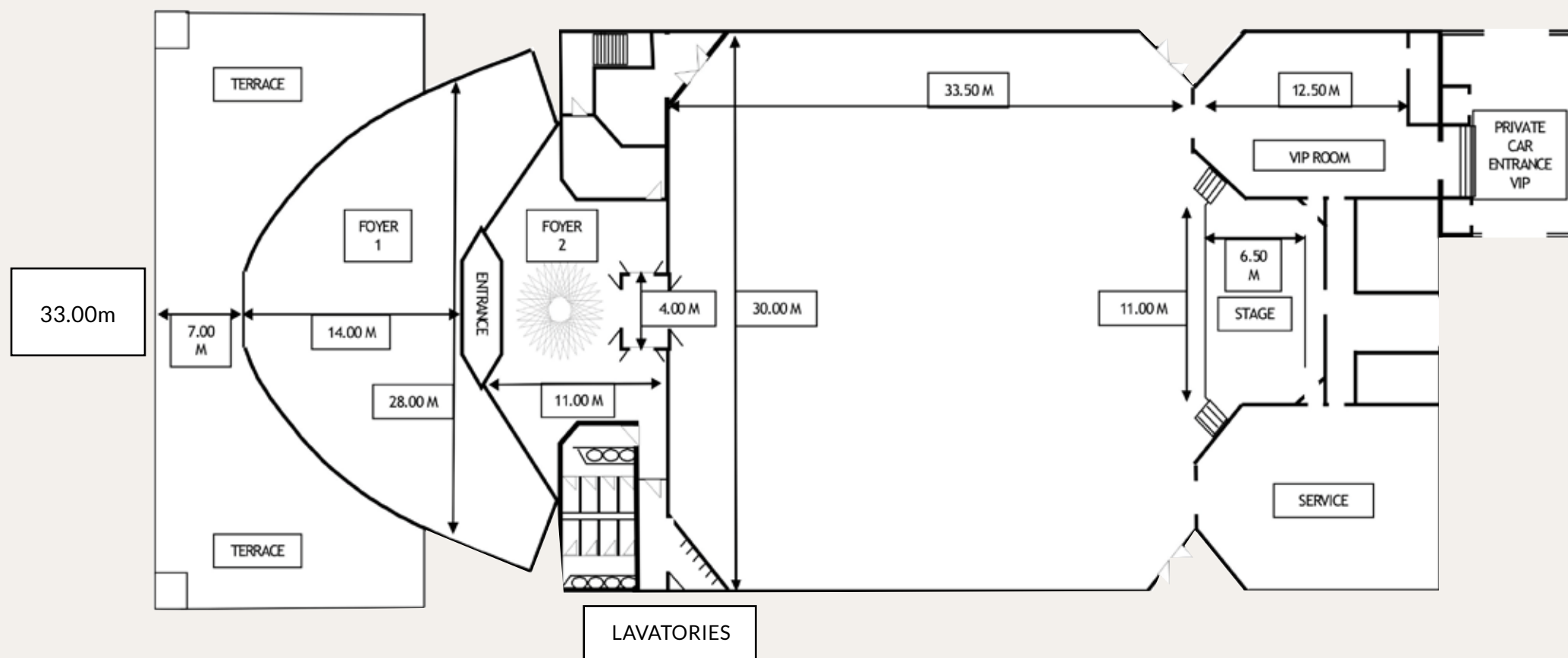


# EGYPT HALL

## (Floor plan)

Egypt Hall accommodates up to 1400 people, one of the largest banquet and conference rooms in the Red Sea region. Designed with a traditional Egyptian theme, Egypt Hall functions as a theatre, conference room, a ballroom or setting for a banquet.

Egypt Hall is air-conditioned and sound-proofed and is equipped with top-of-the-line equipment, including built-in speakers, screens and translation consoles. Changing rooms are adjacent. room is air-conditioned and has state-of-the-art equipment for audio and video presentations.



### SPECIFICATIONS

DETAILS	
Area (m2)	1167
Area (SQ ft)	12556.9
Ceiling Height ( m)	5.2
Ceiling Height (ft)	17
Dimensions Lx W x H (m)	37.4 x 31.17

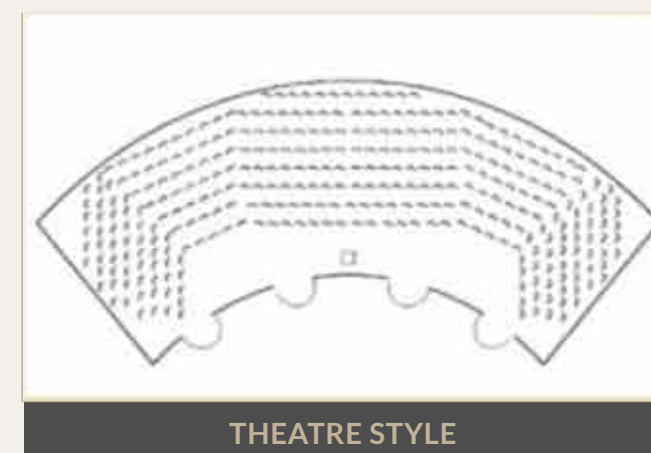
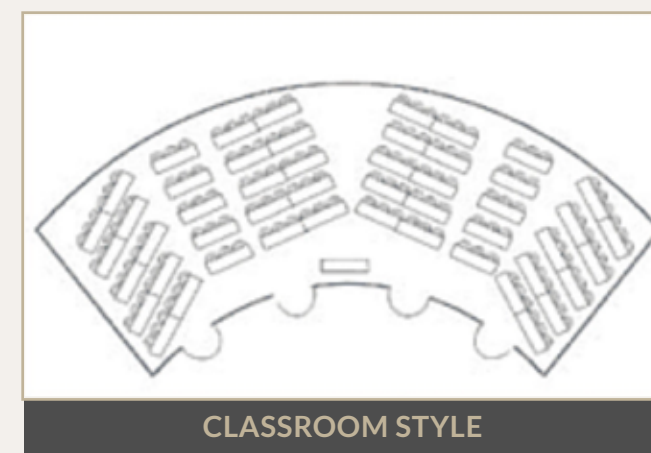
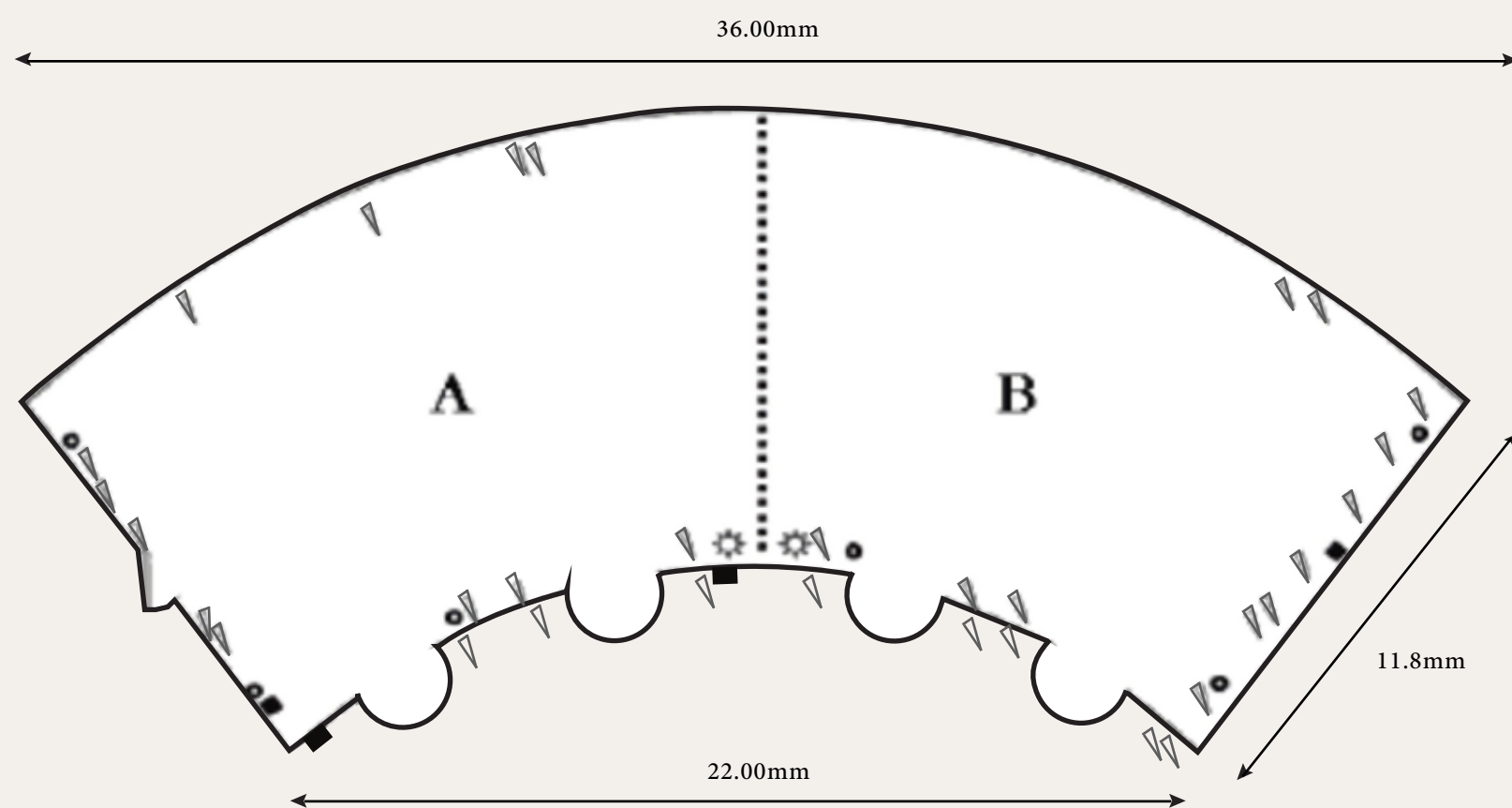
### MAXIMUM ROOM CAPACITY

DETAILS	
Theatre	1400
Classroom	500
U-Shape	-
Boardroom	-
Banquet	1000
Cocktail	1400

# FAYROUZ

## (Floor plan)

State-of-the-art conference room facilities and breathtaking views of the bay have made Fayrouz one of the most popular venues for business functions in the region. Fayrouz is designed for medium-sized conferences or conventions in an elegant setting, accommodating up to 350 people in one room that can be divided into two separate rooms.



### FACILITIES

Electrical plug

Telephone plug

Audio plug

Light & Dimmer

Divider

### MAXIMUM ROOM CAPACITY

#### FAYROUZ A/B

Theatre	175
Classroom	60
U-Shape	38
Boardroom	38
Banquet	100
Cocktail	175

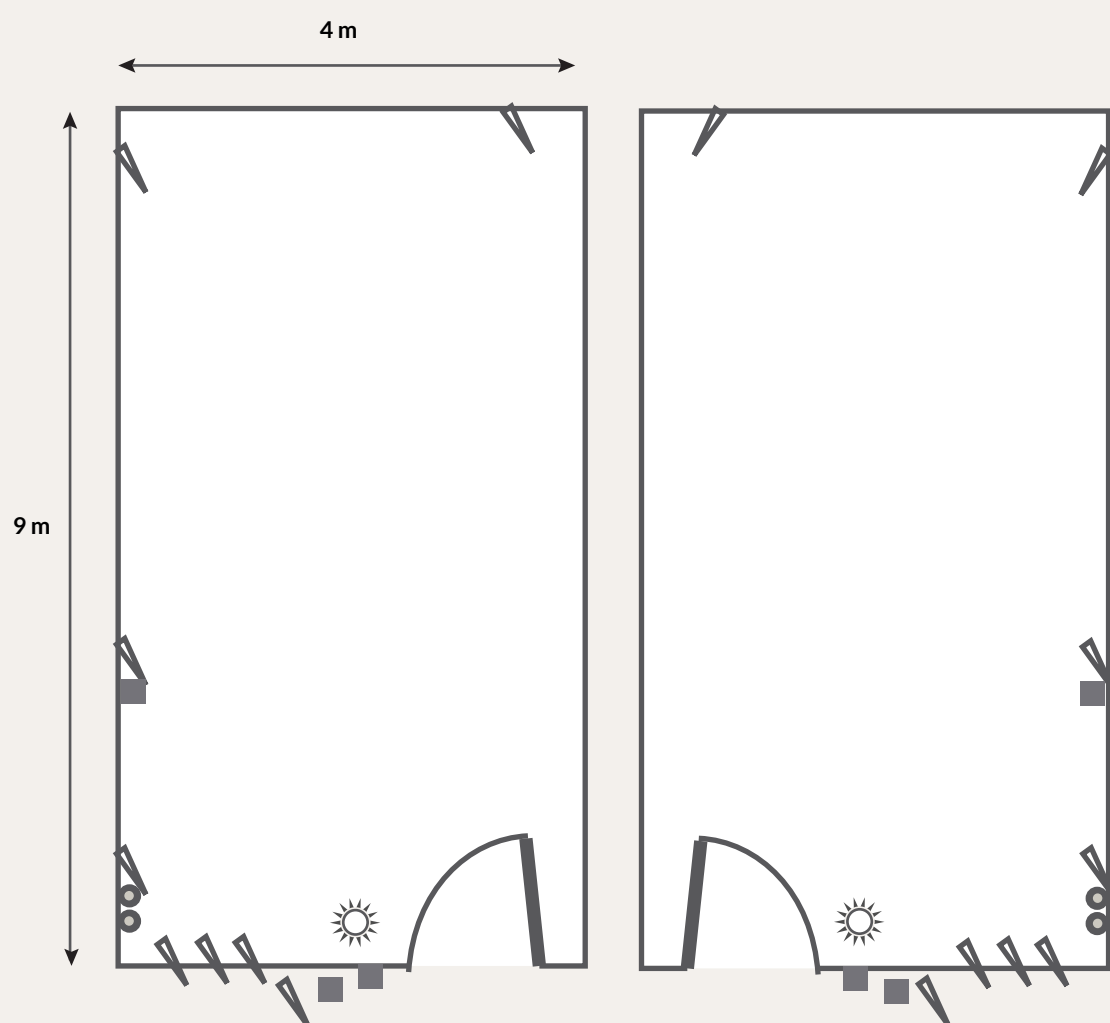
#### FAYROUZ A+B

Theatre	350
Classroom	150
U-Shape	-
Boardroom	-
Banquet	210
Cocktail	350

# AGATE & JADE

## (Floor plan)

Agate and Jade meeting rooms serve as venues for corporate meetings and small events. The Agate and Jade meeting rooms are ideal for breakout sessions alongside conferences and meetings being held in the Egypt Hall and the Fayrouz meeting room. Seating arrangements are flexible and are well-equipped with audio/video systems.



CONFERENCE C	SIZE M	SHAPE	HEIGHT M	AREA sq/m
AGATE	4 x 9 x 3		3.00	32
JADE	4 x 9 x 3		3.00	32

### MAXIMUM ROOM CAPACITY

Theatre	20
Classroom	12
U-Shape	15
Boardroom	16

### FACILITIES

Electrical plug
 Telephone plug
 Audio plug
 Light & Dimmer

